

Two-way Narrowline Slot Diffusers

Description

For supply or extract air, fixed blade slot diffuser available with quick release core, ideal for fan coil units due to low pressure drop and short throws. Suitable for ceiling mounting only.

Construction

From extruded aluminium sections, frame 1.6mm thick, blades 1.6mm thick on 20mm centres. Hairline mitres mechanically locked. Optional OBD is of extruded aluminium.

Size and Weight

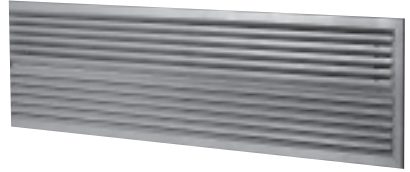
Height of slot diffuser is determined by the number or slots required, usually up to a maximum of 24 slots. The diffuser is designed to form long continuous lengths but is also effective in short sections.

Diffuser only 12.0kg/m². Diffuser and OBD 20.0kg/m².

How to Specify

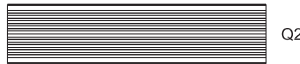
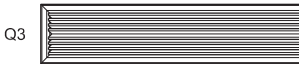
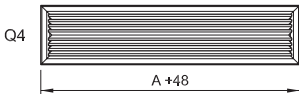
STATE QUANTITY, THE PRODUCT CODING AND THE SIZE WIDTH X HEIGHT

e.g. 10 Qty.Q4RS0+8C 3000 Long.

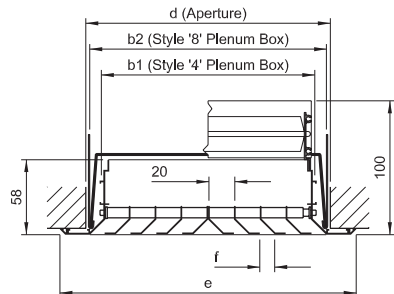
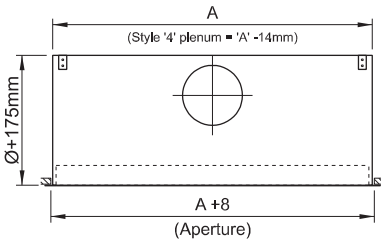


| Frame Style | Slot Quantity | Options | Accessories |
|--------------------------------------|-----------------|--------------------------------------|-----------------|
| Q4 35mm Border 2 End Caps | H > R | S Spring Release Core (J > R) | 0 None |
| Q3 35mm Border 1 End cap | | 0 Fixed Core | V Damper |
| Q2 35mm Border No End Caps | | | |

| Fixings | Finish |
|---|-----------------------------|
| 2 Neck Fixings | C PPC BS /RAL Colour |
| 8 Concealed Rear Bracket ('S' Core Only) | D Mill Finish |
| 4 Drop Rod Lugs | |



Two - Way Air Pattern



| Size | H | J | K | L | M | N | P | R |
|----------------|-------|-------|-------|-------|-------|-------|---------|---------|
| f | 2 + 2 | 3 + 3 | 4 + 4 | 5 + 5 | 6 + 6 | 8 + 8 | 10 + 10 | 12 + 12 |
| b1 (mm) | 87 | 127 | 167 | 207 | 247 | 327 | 407 | 487 |
| b2 (mm) | N/A | 141 | 181 | 221 | 261 | 341 | 421 | 501 |
| d (mm) | 109 | 149 | 189 | 229 | 269 | 349 | 429 | 509 |
| e (mm) | 149 | 189 | 229 | 269 | 309 | 389 | 469 | 549 |

